



וועד הרבנים  
 הרב אשר עקשטיין שליט"א  
 דומ"ץ בקהל חסידי בעלזא  
 הרב יוסף אייזן שליט"א  
 רב דקהל בני תורה  
 הרב יצחק ביסטריצקי שליט"א  
 מרבני חסידי באיאן  
 הרב יצחק שטיין שליט"א  
 ראב"ד קארלסבערג  
 הרב צבי היילפרין שליט"א  
 דומ"ץ עדת יראים וויזן -ב.פ.

נתיסד לתועלת הרבים, בהמלצת גדולי הרבנים שליט"א  
 A NOT-FOR-PROFIT ORGANIZATION TO PROMOTE PROPER FILTRATION  
 718-301-9032

ניסן תשע"ז

# NYC WATER STILL REQUIRES FILTRATION!

*There is no change in copepod findings, in all 5 boros, including Staten Island.  
 The new filtration plant treats only Croton water, which is less than 5% of the entire supply.*

## APPROVED FAUCET MOUNTED FILTERS

**EZ-FILTER; PUR; BRITA (NOT THE PITCHER FILTER - IT LETS THOUGH COPEPODS); WATERPICK**

The EZ-Filter is reliable with or without the fiber inserts. The inserts are for convenience.

The very first EZ-Filters had cup shaped screens... these often eventually rip, so check them.

For the past 11 years, the EZ-Filter has a flat (not cup shaped) screen.

This design is very reliable...the screens do not rip.

AN OLD STYLE EZ-FILTER  
 (CUP-SHAPED SCREEN) WITH A RIP



## APPROVED UNDER-THE-SINK FILTERS

RECOMMENDATIONS ARE FOR FILTER **CARTRIDGES**. REGARDING FILTER **HOUSINGS**, ANY BRAND MAY BE USED.

**GLATTWATER PREMIUM 5 MICRON:** Most reliable - it is the only filter of its type to have never yet had a failure. It has good life (10,000 gallons). Replace when water pressure drops. Cold water only.

**GLATTWATER ULTIMATE: RECOMMENDED FOR HOT WATER.** Must change when water pressure drops, or yearly even if they did not clog (commercial users should change monthly).

**AQUAPURE MODEL NO. AP117:** This filter removes chlorine. It may be left in place until water pressure drops.

**BII (BOSHART) BRAND (10 MICRON OR LESS):** Reliable for 6 months only. Then they must be changed even if not clogged. Left longer they can fall apart and let through bugs. **NOT RECOMMENDED** for public places (shuls, mosdos, caterers, etc.) where the filters are often not maintained.

## APPROVED QUICK CHANGE FILTER

**3M (AQUAPURE) AP-RC-101:** A hi-end product, designed by 3M specially for NYC water to remove copepods.

Filter is factory sealed in a quick-change housing, making it 100% reliable and foolproof. Will last a year or two

(commercial sites: 6 months) before clogging.

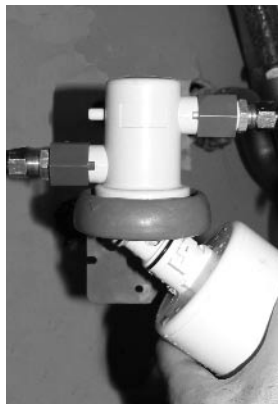
Change out takes seconds and requires no tools or expertise.

### CHANGEOUT OF THE NEW QUICK-CHANGE FILTER BY 3M.

THE ENCAPSULATED FILTER EASILY TURNS 1/4 TURN AND COMES OUT.

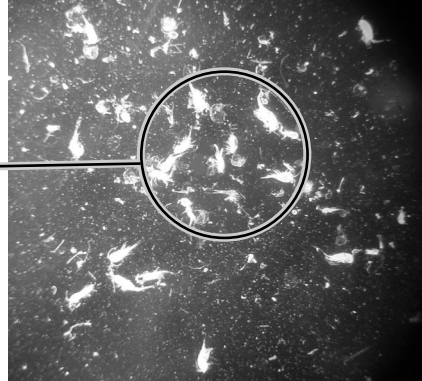
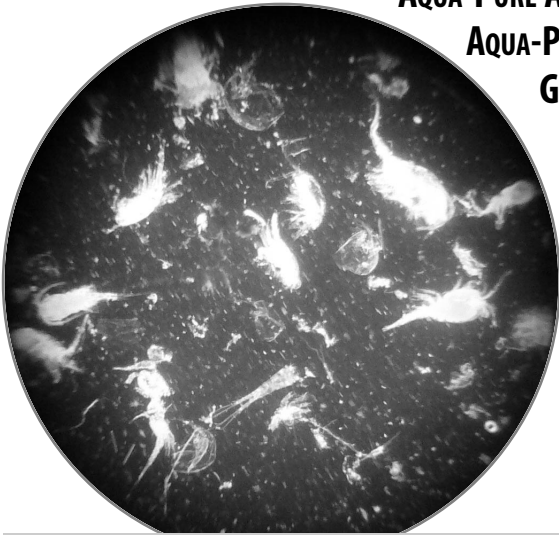
AN INTERNAL VALVE TURNS OFF WATER FLOW AUTOMATICALLY WHEN FILTER IS REMOVED.

100% RELIABLE AT REMOVING COPEPODS, AND LASTS OVER 30,000 GALLONS BEFORE CLOGGING.



## NOT RECOMMENDED UNDER-THE-SINK

**AQUA-PURE AP110** BY 3M-FORMERLY CUNO (POPULAR IN PLUMBING SUPPLY STORES),  
**AQUA-PLUMB** (POPULAR IN HARDWARE STORES), **AMIAD**, **AMERICAN PLUMBER**,  
**GE** (SOLD IN HOME DEPOT), **WHIRLPOOL** (SOLD IN LOWES).



**THIS IS WHY IT IS IMPORTANT TO USE A RECOMMENDED FILTER !**

All these copepods were collected from several gallons of water while testing a **NOT** recommended filter (labeled as a 5 micron filter!)

## APPROVED WATER-MAIN FILTERS

**AQUAPURE AP903 / AP910R.** *Very* reliable water main filter. Filter is factory sealed inside a one-time-use canister that fits into a specialized quick-change head. It is *easy* to change (no tools needed). However, it is expensive. Recommended for locations with low water usage (small families), or in conjunction with a backwash system.

### FOR 20 INCH 'BIG BLUE' HOUSINGS:

**AQUAPURE AP810-2 (5 MICRON) / AP811-2 (25 MICRON) — ONLY AS PER INSTRUCTIONS, BELOW:**

Only versions that have **black** rubber washers on the plastic endcaps may be used.

Do **not** use if there is a **yellow** rubber washer.

**GLATTWATER FC-20P5 (25 MICRON)**

This is a new product by Glattwater. It is more economical than the Aquapure version.

### 10 INCH 'BIG BLUE' HOUSINGS:

**AP810 / AP811- AS PER INSTRUCTIONS (ABOVE).**

### BACKWASH SYSTEMS:

**BACKWASH SYSTEMS CLEAN THEMSELVES OUT AND ARE MAINTENANCE FREE. HOWEVER, BY THEMSELVES THEY ARE NOT HALACHICALLY RELIABLE FOR REMOVING COPEPODS. AN APPROVED FILTER MUST BE INSTALLED AFTER THE BACKWASH FILTER. THE TWO TOGETHER ARE MAINTENANCE FREE AND RELIABLE.**

**A backwash filter system.**

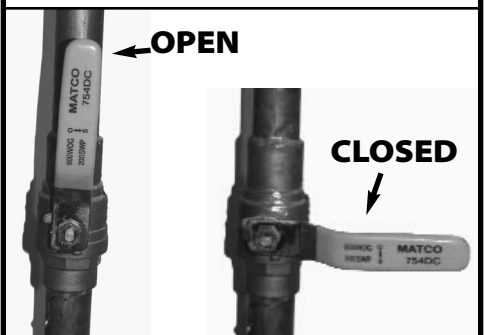
Note the smaller canister filter, to the right. This is needed to make the system halachically reliable.



### BYPASS VALVES

**WATER MAIN FILTERS USUALLY HAVE BYPASS VALVES. IF THE BYPASS VALVE OF THE WATER MAIN FILTER IS OPEN, THE FILTER IS WORTHLESS!**

THE VALVE IS OPEN IF THE LEVER IS IN THE SAME DIRECTION AS THE PIPE



## THE FOLLOWING TYPES ARE ALWAYS RELIABLE

**HALF MICRON, CYST RATED FILTERS (THOSE THAT CLAIM TO REDUCE GIARDIA, CRYPTOSPORIDIUM, ETC.)**

These are designed for health, and so are made reliably. There are many different types. They are expensive and clog quickly, so they can't go on the regular kitchen faucet. A separate glass-filler spout is needed.

**FILTERS CONNECTED WITH 1/4" FLEXIBLE TUBING**

This tubing is often used for icemakers, refrigerators, or water coolers/heaters. It is about the thickness of a pencil, and is either copper or plastic. Water flows through this tubing very slowly, and so all filters are reliable.